

How safe is your food?

Source and number of outbreaks* in the European Union in 2015

Milk and dairy products



55

Mixed food



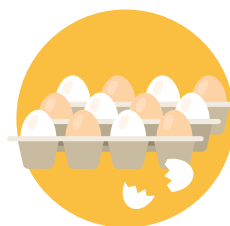
47

Pork



42

Eggs and egg products



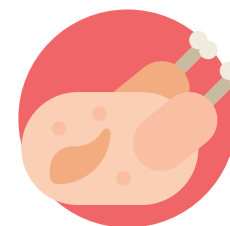
42

Seafood



40

Chicken and turkey meat



40

Food of non-animal origin



19

The most common food-borne diseases in the European Union

Campylobacter

2014 236 818 reported cases

2015 229 213 reported cases

Salmonella

2014 92 007 reported cases

2015 94 625 reported cases

Listeria

2014 2 242 reported cases

2015 2 206 reported cases

Outbreaks

2014 | **2015**

29 | 25

Outbreaks**

2014 | **2015**

225 | 184

Outbreaks

2014 | **2015**

6 | 5

* Outbreaks refer to strong-evidence food-borne outbreaks (excluding waterborne outbreaks).

**The difference in the number of reported strong-evidence foodborne outbreaks is likely to be affected by differences in the classification of the outbreaks compared with previous years.