

# Spain

Total population at 1 January 2012 by EUROSTAT: 46 188 133

## Tuberculosis case notifications, 2012

Total number of cases	5991
Notification rate per 100 000	13.0
New & relapses (lab+) number	5347
New & relapses (lab+) notification rate per 100 000	11.6
Pulmonary of which smear-positive	4 305 (71.9%) 2 204 (51.2%)
Laboratory-confirmed TB cases	3 845 (64.2%)
Mean age of new native TB cases	48.8 years
Mean age of new foreign TB cases	34.2 years
Foreign origin of all TB cases	1 853 (30.9%)
New (not previously treated)	5 347 (89.3%)

## Drug resistance surveillance & TB-HIV co-infection, 2012

Completeness of DRS data*	No
Completeness of HIV data**	Yes
Case-linked data reporting	No
Cases with DST results	871 (22.7%)
Cases resistant to isoniazid	87 (10.0%)
Cases resistant to rifampicin	38 (4.4%)
Estimated MDR N, (best-low-high)	31-13-49
MDR cases	37 (4.2%)
of which XDR cases	1 (2.7%)
Cases resistant to ethambutol	-
Cases resistant to streptomycin	-
TB cases tested for HIV	4 179 (69.8%)
HIV-positive TB cases	370 (8.9%)

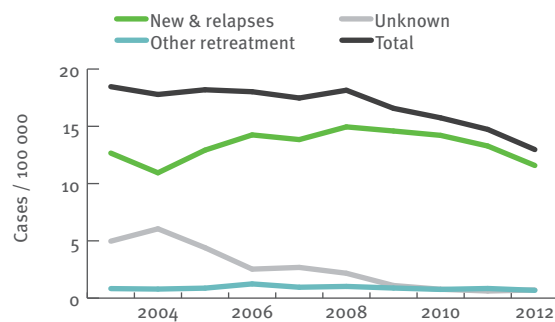
\* National coverage 100% or culturing 90%, C+/All TB cases 50%, DST done for C+ 75%, EQA 95%  
\*\* More than 50% of TB cases tested for HIV.

## Treatment outcome monitoring

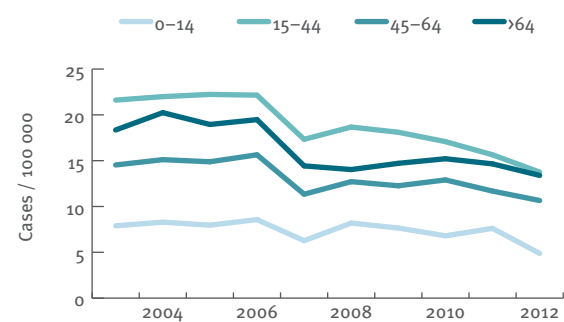
Geographical coverage	National	
Outcome cohort	New laboratory confirmed pulmonary TB cases notified in 2011*	All MDR TB cases notified in 2010**
Case-linked data reporting	Yes	
Notified in 2010	3 335	-
Success	2 444 (73.3%)	-
Died	228 (6.8%)	-
Failed	4 (0.1%)	-
Defaulted	21 (0.6%)	-
Still on treatment	45 (1.3%)	-
Lost to follow up	593 (17.8%)	-

\* Treatment outcome as presented is treatment outcome after 12 months.  
\*\* Treatment outcome as presented is treatment outcome after 24 months.

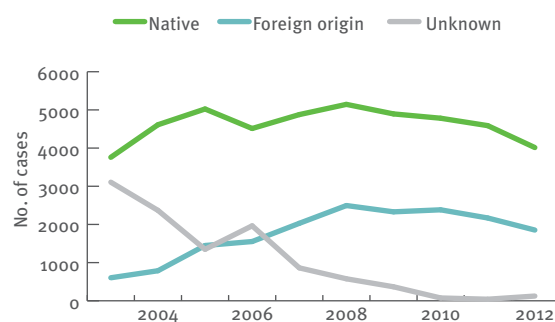
## Tuberculosis notification rates by treatment history, 2003–2012



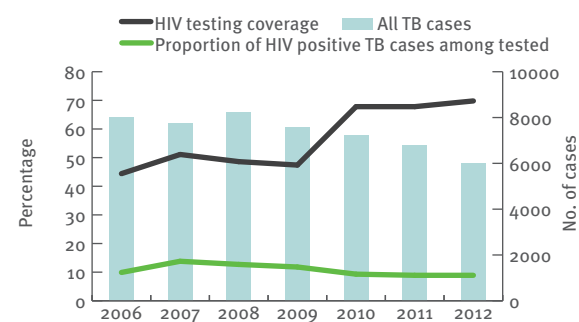
## New TB cases - notification rates by age group, 2003–2012



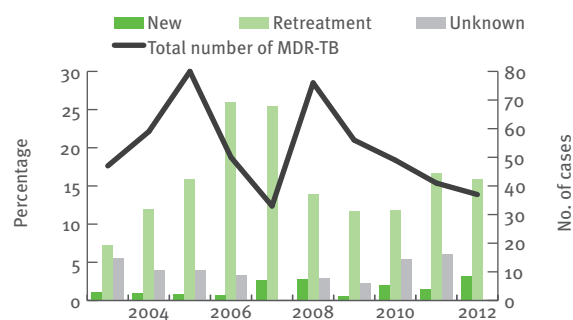
## Tuberculosis cases by geographical origin, 2003–2012



## TB-HIV co-infection, 2006–2012



## MDR-TB cases by previous treatment history, 2003–2012



## Treatment outcome, new pulmonary culture-positive cases, 2002–2011

