

Seasonal influenza vaccination programme country profile: Slovakia

2012–13 Season

Background information

Influenza immunisation policy and general facts about Slovakia	
Volume indices of GDP per capita in 2011 and 2013 (EU-28=100) Source: Eurostat ^a	73 and 75 respectively
Health costs as % of GDP 2011 Source: Eurostat ^b	5.9%
Total population of the country, 2011 Source: Eurostat ^c	5 397 036
Population ≥65, 2011 Source: Eurostat ^c	682 873 (12.7% from the total population)
Population with chronic medical conditions <65 years, 2006 Source: ECDC (based on methodology by Fleming and Eliot, 2006) ^d	447 000 (8.3% from the total population)
Number of live births in 2011 ^e	60813 (1.1% from the total population)
National seasonal influenza recommendations (e.g. age and target group recommendations and guidelines)	Recommendations available
URL link to Immunisation Guidelines for Slovakia	http://www.uvzsr.sk/docs/leg/585_2008.pdf
National Action Plan (NAP) as requested by EC	Plan not adopted
URL link to NAP	na

na: Not applicable

EUROSTAT links:

^aGDP per capita 2013 (accessed 15.12.2014): http://ec.europa.eu/eurostat/statistics-explained/index.php/GDP_per_capita,_consumption_per_capita_and_price_level_indices

^bHealth expenditures 2011(accessed 15.12.2014): http://ec.europa.eu/eurostat/statistics-explained/index.php/General_government_expenditure_on_social_protection_and_health

^cTotal population and those > 65 years of age 2011(accessed 15.12.2014): <https://ec.europa.eu/CensusHub2/intermediate.do?method=forwardResult>

^d Population with chronic medical conditions 2006:
http://www.ecdc.europa.eu/en/publications/Publications/0808_GUI_Priority_Risk_Groups_for_Influenza_Vaccination_on.pdf (Fleming, D.M. and A.J. Elliot, Estimating the risk population in relation to influenza vaccination policy. 2006 May 15; 24(20):4378-85)

^e Number of live births in 2011(accessed 15.12.2014): <http://ec.europa.eu/eurostat/tgm/table.do?tab=table&init=1&language=en&pcode=tps00111&plugin=1>

Seasonal influenza vaccination recommendations and payment mechanism for vaccination

Vaccination recommendations (population groups targeted by vaccination)	
Overall population	No recommendation
Healthy children and adolescents ≥6 months–12 years of age	Recommended
Older population groups: ≥59 years of age	Recommended
Chronic medical conditions	Recommended: <ul style="list-style-type: none"> - Pulmonary diseases; - Cardiovascular diseases; - Renal diseases; - Hepatic diseases; - Haematological disorders; - Metabolic disorders; - Immunosuppressed individuals.
	No recommendation: <ul style="list-style-type: none"> - Neurologic diseases; - HIV/AIDS; - Morbid obesity; - Long-term aspirin use (children <18 years).
Pregnancy-related vaccination (including post-partum women)	No recommendation: <ul style="list-style-type: none"> - For pregnant women. - For postpartum women if not vaccinated during pregnancy.
Healthcare workers	Recommended: <ul style="list-style-type: none"> - For some healthcare workers^{a, b}
Other occupational groups	Recommended: <ul style="list-style-type: none"> - Military; - Laboratory workers working in other laboratories (not medical/public health laboratories, but who may work with avian influenza viruses in the environmental/ academic sector); - Wildlife environmentalists (workers who work with birds directly e.g. bird ringing).
Population groups in closed communities	Recommended: <ul style="list-style-type: none"> - For residents of long-term care facilities;
	No recommendation: <ul style="list-style-type: none"> - For prisoners; - For children in day care centres
Household contacts or carer of:	Recommended: <ul style="list-style-type: none"> - Immunosuppressed individuals
	No recommendation: <ul style="list-style-type: none"> - Infants <6months of age; - Individuals with chronic medical conditions; - ≥65 years of age.

^a 'Some' means outpatient/inpatient/long-term care facilities workers/ front line healthcare workers/ those healthcare workers who have direct contact with patients.

^b The healthcare workers having close contact with patients or foci of infection.

*Not all disorders recommended vaccine: for adults vaccine recommended only for those with diabetes. For children vaccine recommended for those with diabetes and other metabolic disorders.

** Not recommended per se, but if the HIV/AIDS leads to immunosuppression, the individuals will be recommended vaccination accordingly.

Payment mechanism for vaccine and its administration for the population groups targeted by seasonal influenza vaccine		
	For vaccine	For administration
Overall population	na	na
Healthy children and adolescents ≥6 months–12 years of age	National insurance scheme	National insurance scheme
Older population groups (≥59 years of age) ^a	National insurance scheme	National insurance scheme
Chronic medical conditions groups (by each chronic medical conditions group) ^a	National insurance scheme	National insurance scheme
Pregnancy related vaccination (including post-partum women) ^a	na	na
Health Care Workers (including staff of long stay care facilities) ^a	Employer	Employer
Other occupational groups ^a	Employer	Employer
Population groups in closed communities ^a	National insurance scheme	National insurance scheme
Household contacts or care takers	na	na

na: Not applicable

^aNo co-payment for vaccine and vaccine administration.

National insurance scheme: health contributions are paid to the insurance fund and then for this contribution there is a package of services received. It is not by default that you receive the services if you do not pay the insurance contributions.

National health service: taxes are paid by a citizen or resident of the country and this person is covered by the health service.

Out of pocket: not reimbursed, paid by receiver of vaccine.

Vaccination coverage rates

Vaccination coverage (%) in population groups targeted by seasonal influenza vaccination the from 2008–09 to the 2012–13 influenza season by method of data collection (administrative and /or survey)										
Population group	Influenza season									
	2008–09		2009–10		2010–11		2011–12		2012–13	
	Admin.	Surv.	Admin.	Surv.	Admin.	Surv.	Admin.	Surv.	Admin.	Surv.
Overall population	12.8	na	12.4	na	9.1	na	7.5	na	4.6	na
Children/adolescents ≥6 months–15 years of age	8.6	na	7.5	na	4.3	na	2.7	na	1.6	na
Older population groups: ≥59 years of age	35.5	na	30.5	na	23.8	na	21.9	na	15.4	na
Chronic medical conditions groups	NA	na	NA	na	NA	na	NA	na	NA	na
Pregnant women ^a	-	-	-	-	NA	na	NA	na	NA	na
Healthcare workers	NA	na	NA	-	NA	na	NA	na	NA	na
Staff in long stay care facilities ^b	-	-	-	-	-	-	NA	na	NA	na
Residents in long stay care facilities ^b	82.6	-	82.9	-	82.9	-	78.9	na	71.1	na

na: Not applicable

NA: Not available

^a VENICE started to collect vaccination coverage data for pregnant women after the A(H1N1)pdm09 (2010-11 influenza season).

^b VENICE started to collect vaccination coverage data for staff and residents in long-stay care facilities for the influenza season 2011-12.

Figure 1. Seasonal influenza vaccination coverage among those ≥ 65 years of age from the 2008–09 to the 2012–13 influenza season

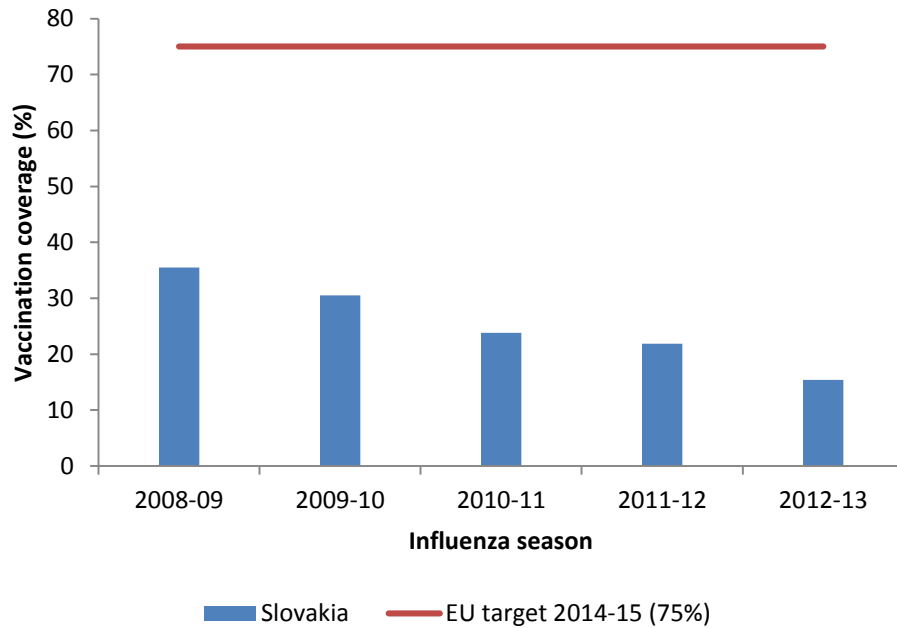
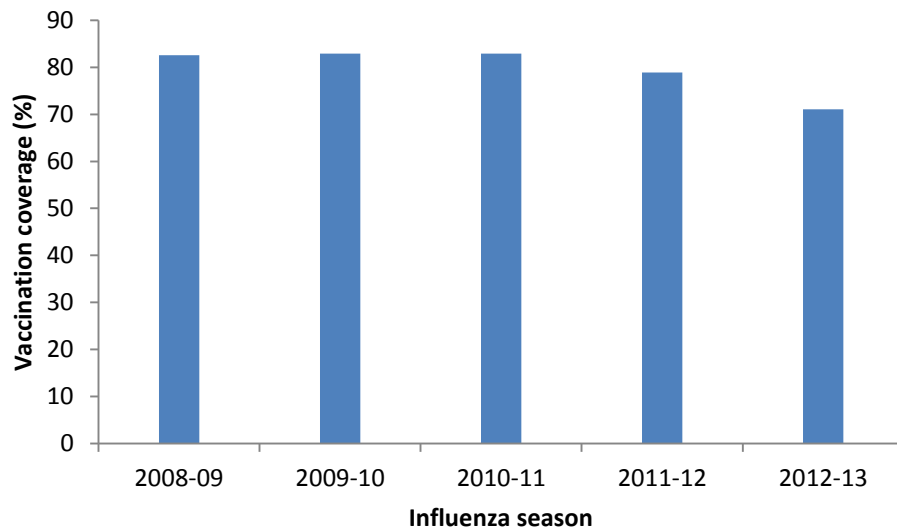


Figure 2. Seasonal influenza vaccination coverage among residents and staff of long-stay care facilities, 2011–12 influenza season



Note: VENICE started to collect vaccination coverage data for staff and residents in long stay care facilities for the 2011–12 influenza season.

Methods to monitor vaccination coverage, safety and effectiveness

Monitoring of vaccination coverage during the 2012–13 influenza season	
Method used to monitor influenza vaccination coverage	
Administrative method only	

Method used (administrative, survey) to monitor vaccination coverage by population group ^a	
Administrative	Survey
Entire population; Children and adolescents: ≥6months -15 years; Adults: aged 16 - <58 years old; ^a Adults: aged ≥59 years old; Residents of long term care institutions.	na

na: Not applicable

^a The vaccination coverage is monitored for officially and also not officially recommended age groups (overall entire population, overall children 0–15 years, overall adolescents and adults 16 – 58 years and overall 59 years and older).

Details on administrative method used (medical records vs. immunisation registry; manual vs. electronic) by population group			
Medical records		Immunisation registry	
Manual	Electronic	Manual	Electronic
Residents of long term care institutions.	Entire population; Children and adolescents: ≥6months -15 years; Adults: aged 16 - <58 years old; Adults: aged ≥59 years old;	No	No

Numerator assessment		
Pharmaceutical data	Administrative data	Frequency of numerator assessment
Vaccine distribution data from national purchaser-entire population; Vaccine data by sales and distribution from pharmacies- entire population	Aggregate collection of number of vaccines administered; Aggregate collection of number of vaccines distributed (national purchaser); Aggregate collection of number of vaccines sales (private pharmacies); Payment/ reimbursement claims	Annually: May–June

Denominator assessment by population groups and data source	
Population group	Data source for population group
Entire population	Used. The total number of population
Children and adolescents	Used. The number of 0-15 years olds out of the total number of population
Adults	Used. The number of 16-58 years olds and 59 and more years olds out of the total population
Individuals with medical/risk conditions (clinical risk groups)	Not used
Pregnant women	Not used
Health care workers	Not used
Essential public sector workers	Not used
Prisoners	Not used
Residents of long term care institutions	Used. The number of vaccinated residents out of the total number of residents.
Educational institutions	Not used
Other, please specify	Not used

Details for survey method used for the 2012–13 influenza season			
Type of the survey	Survey mode	Sampling strategy	Sample size
na	na	na	na

na: Not applicable

Scientific studies conducted for vaccination coverage; vaccine safety and vaccine effectiveness
Not performed

Vaccine safety monitoring (adverse events following immunisation AEFV)				
Data collected at the national and at the regional level	Data linkage with immunisation registry	Details collected	Status of reporting	AEFV reported to
Yes	Not possible	Aggregated data including age, sex and suspected symptoms should be reported	Mandatory	State Institute of Drug Control, Regional Public Health Authorities

Monitoring of influenza vaccine break-through ^a infections in vaccinated individuals		
Data collected at the national and at the regional level	Data linkage with immunisation registry	Details collected
There is no such system	na	na

na: Not applicable

^a Break-through infection is defined as laboratory-confirmed influenza infection >14 days after seasonal influenza vaccination in the current season (i.e. vaccine failure).

Vaccine procurement and delivery

Influenza vaccine procurement and delivery, 2012–13 influenza season		
Number of doses		
Purchased	Distributed	Used
262 996	249 684	249 684

Type of vaccine/Product Name	Target groups
Trivalent inactivated non-adjuvanted vaccines (TIV)	
Used ^a	
Abbott; GlaxoSmithKline; Sanofi Pasteur	Children and adolescents; Healthy adults; Older adults (e.g. ≥60/65 years); Those with medical condition/s; Pregnant women; Residents of long stay care facilities; Health Care Workers; Other occupational groups; Other target group: Residents of social care facilities
Trivalent inactivated adjuvanted vaccines (aTIV)	
Not used	
Trivalent live attenuated nasal vaccine (LAIV)	
Not used	
Quadrivalent attenuated nasal vaccine (LAIV)	
Not used	
Quadrivalent inactivated non-adjuvanted vaccine (QIV)	
Not used	

Promoting seasonal influenza vaccination

Promoting seasonal influenza vaccination during the 2012–13 influenza season	
Promotion activities with the general public and healthcare workers	Source of information (if yes)
General public	
Yes	Radio; Newspapers; Website
Population over 65	
Yes	Radio; Newspapers; Website
Pregnant women	
No	na
Chronic medical conditions	
Yes	Radio; Newspapers; Website
Healthcare workers	
No	na

na: Not applicable

Use of antiviral agents for treatment and chemoprophylaxis of influenza

Recommendations and/or guidelines (policy document) on antiviral use	
There is no such recommendation	
Use of antiviral agents for treatment and chemoprophylaxis of influenza during the 2012–13 influenza season	
Use of antivirals for <u>treatment</u> for in-patients and out-patients who are at higher risk of developing influenza complications	
For in-patients who:	
<ul style="list-style-type: none"> - have severe, complicated influenza-like illness (ILI); - have progressive influenza-like illness; - require hospitalisation due to influenza-like illness. 	na
For out-patients who are at higher risk of developing influenza complications on the basis of their age or underlying medical conditions:	
<ul style="list-style-type: none"> - Residents of nursing homes and other chronic-care facilities. - Children < 2 years; - Children < 5 years; - Adults aged ≥65 years; - Individuals belonging to risk groups. - Women who are pregnant or postpartum (within 6 weeks after delivery). 	na
Use of antivirals for <u>post-exposure</u> prophylaxis	
For family or other close contacts of a person at higher risk for influenza complications who have not been vaccinated with influenza vaccine at the time of exposure.	na
For unvaccinated healthcare workers with occupational exposure and who did not use personal protective equipment at the time of exposure	na
Use of antivirals for <u>pre-exposure</u> prophylaxis	
For individuals who are at high risk (e.g. severely immunosuppressed patients) for influenza-related complications who cannot otherwise be protected during times when a high risk for exposure exists	na
Use of antivirals for <u>control of influenza outbreaks</u>	
For individuals in long-term care facilities/care for immunocompromised individuals if not vaccinated or if the circulating influenza strain does not match the vaccine strains	na
For unvaccinated healthcare staff who provide care to individuals at high risk of developing complications in long-term care facilities/ care for immunocompromised patients if not vaccinated or if the circulating influenza strain does not match the vaccine strains	na
For all health care staff regardless of whether they received an influenza vaccination if the circulating influenza strain does not match the vaccine strains	na
Prisoners	na
Educational institutions	na
Existence of antiviral resistance surveillance system	
Antiviral resistance surveillance system	There is no antiviral resistance surveillance system in place

na: Not applicable

Country profiles are based on the [Seasonal Influenza Vaccination in Europe](#) report produced by the European Centre for Disease Prevention and Control (ECDC) and the Vaccine European New Integrated Collaboration Effort III (VENICE III). The data are from the seasonal influenza vaccination survey for 2012–13 season in EU/EEA countries. Results above use the same data as was available when the report was published. During the validation process in June 2015, minor changes were introduced in some country profiles. Therefore, data may be different to those available in the report.