

Tuberculosis surveillance and monitoring in Europe 2017

Lithuania

Total population at 10th August 2016 by EUROSTAT: 2921262

Tuberculosis case notifications, 2015

Total number of cases	1507
Notification rate per 100 000	51.6
New* & relapses	1395
New* & relapses notification rate per 100 000	47.8
Pulmonary	1372 (91.0%)
of which microscopy-positive	888 (64.7%)
of which laboratory confirmed	1183 (86.2%)
Laboratory-confirmed TB cases	1221 (81.0%)
Mean age of new native TB cases	46.9 years
Mean age of new foreign TB cases	68.6 years
Foreign origin of all TB cases	15 (1.0%)
New (not previously treated)	1217 (80.8%)

* Cases with unknown previous treatment included in new cases.

Drug resistance surveillance & TB-HIV co-infection, 2015

Completeness of DRS data*	Yes
Completeness of HIV data**	Yes
Case-linked data reporting	Yes
Cases with DST results	1221 (100.0%)
Estimated MDR N, (best–low–high)	270–240–300
Pulmonary MDR TB cases notified	238 (20.1%)
of which XDR TB cases	58 (24.4%)
Notified MDR TB	241 (19.7%)
of which XDR TB cases	59 (24.5%)
TB cases tested for HIV	1082 (71.8%)
HIV-positive TB cases	39 (3.6%)
of these on antiretroviral therapy	–

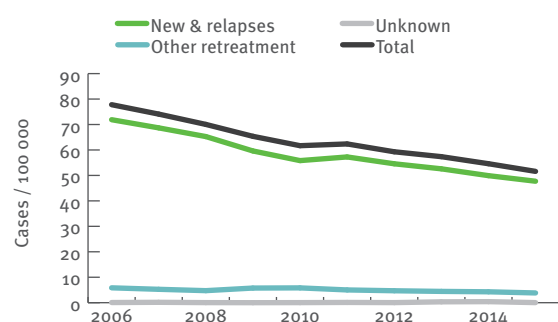
* National coverage 100% or culturing 90%, C+/All TB cases 50%, DST done for C+ 75%, EQA 95%.
** More than 50% of TB cases tested for HIV.

Treatment outcome monitoring

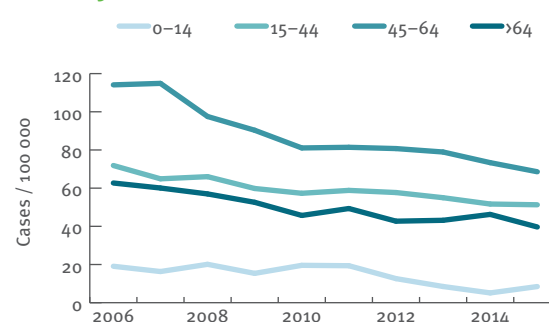
Geographical coverage	National	
Outcome cohort	New culture positive pulmonary TB cases notified in 2014*	All MDR TB cases notified in 2013**
Case-linked data reporting	Yes	
Cases notified	944	256
Success	660 (69.9%)	76 (29.7%)
Died	110 (11.7%)	59 (23.0%)
Failed	6 (0.6%)	13 (5.1%)
Lost to follow-up	75 (7.9%)	71 (27.7%)
Still on treatment	89 (9.4%)	35 (13.7%)
Not evaluated	4 (0.4%)	2 (0.8%)

* Treatment outcome as presented is treatment outcome after 12 months.
** Treatment outcome as presented is treatment outcome after 24 months.

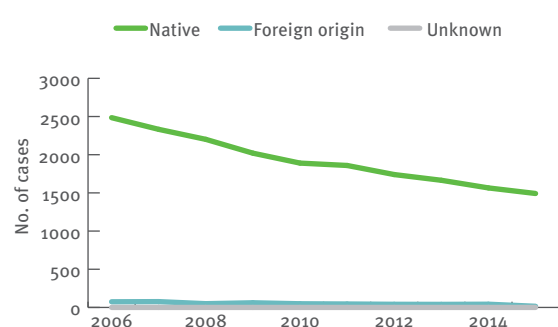
Tuberculosis notification rates by treatment history, 2006–2015



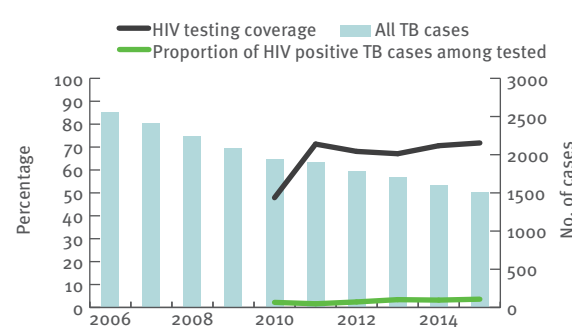
New and relapsed TB cases – notification rates by age group, 2006–2015



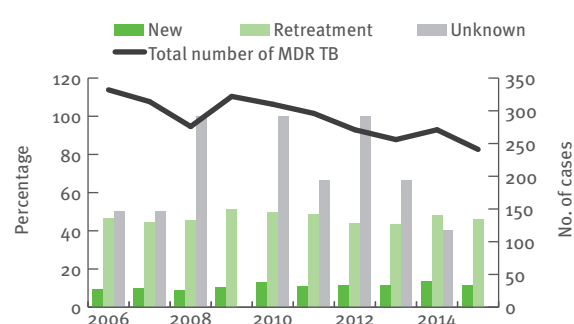
Tuberculosis cases by geographical origin, 2006–2015



TB-HIV co-infection, 2006–2015



MDR TB cases by previous treatment history, 2006–2015



Treatment outcome, new culture-confirmed pulmonary TB cases, 2005–2014

